



"With PerformaSure, we are able to conduct effective pre-production performance testing across the application, which has dramatically improved the reliability and stability of our deployed code."

— Jason Barry,
Performance Architect,
DeCare Systems Ireland

- Features unique Tag-and-Follow™ technology and powerful diagnostics user interface
- Offers low, configurable overhead
- Integrates with Quest's detailed diagnostic tools for line-of-code level analysis
- Provides on-demand diagnostics out of the box
- Enables live views of diagnostic data while recording sessions

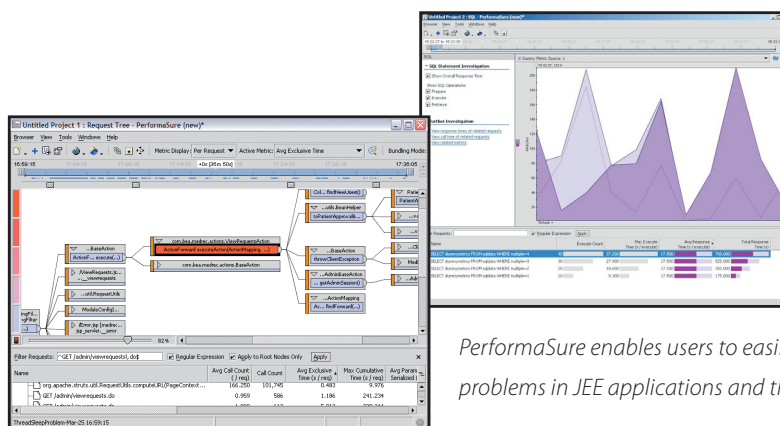
PerformaSure®

Java Application Performance Diagnostics

Quickly diagnosing and resolving performance issues in Java applications is a challenge, especially given the complexity of a multi-tiered environment. Consequently, deploying inadequately tested applications into production can result in costly performance issues that negatively impact you and your customers. Performance tuning engineers need intelligent Java diagnostics that can trace problems through all components and code of a Java system operating under real-world user loads.

PerformaSure® is a performance diagnostic tool for multi-tiered Java applications. By combining transactional data with infrastructure metrics, PerformaSure makes it easy for performance engineers at all points to measure, analyze and maximize Java application performance.

- Pinpoint problematic user transactions
- Identify the problem tier or server, including application servers and databases
- Correlate metrics in a unified view to quickly isolate resource contention problems
- Find inefficient servlets, JSPs, EJBs, Java classes and methods quickly
- Highlight slow-running SQL statements and isolate problems in your application's use of the database, including leaked connections
- Tune application server deployment and JVM memory configuration settings



PerformaSure enables users to easily locate problems in JEE applications and the database.

System Requirements:

Application Servers Supported

- Oracle/BEA WebLogic Server
- IBM WebSphere Application Server
- Oracle Application Server
- JBoss Application Server and EAP
- Tomcat
- Others via X-Agent

Database Servers Supported

All JDBC compliant DMBS, including:

- Oracle
- IBM DB2
- Microsoft SQL Server
- Sybase

Operating Systems Supported

- Oracle/Sun Solaris
- Windows XP, 2003, Vista, 2008
- IBM AIX
- HP-UX
- Red Hat, CentOS and SuSE Linux

PerformaSure Nexus and

Workstation Requirements

- Oracle/Sun Solaris
- Windows XP, 2003, Vista, 2008
- Red Hat, CentOS and SuSE Linux
- 2 GHz processor
- 1 GB RAM (Workstation) or 2 GB RAM (Nexus)
- 10 GB disk for data storage (Nexus only)
- 100 Mbps network adapter

Exclusive Request Tree View

A color-coded, graphical representation of the transaction request provides you with the most intuitive way to browse through the critical path of execution to instantly identify bottleneck components.

SQL Browser

PerformaSure's SQL Browser makes it easy to find your most problematic SQL operations, and even subdivides time spent in opening connections, closing connections, preparing the statement, executing the query and parsing the resulting data. This data makes it easy for SQL programmers – even novices – to find the root cause of complex JEE/database interaction problems.

Uninterrupted Control

You can conveniently control PerformaSure's Power-Filtering, overhead and data-gathering options – all without restarting servers or disrupting systems.

Capture Data at Different Levels of Detail

A high-level component performance view makes initial investigation easier. You can configure the level of data collected, down to the method-level, and the associated sampling rate (up to 100% of requests) to control the amount of overhead.

Transaction Tag-and-Follow™

PerformaSure's unique Tag-and-Follow technology provides you with a transaction-centric view of the performance of an entire JEE application. Tag-and-Follow reconstructs the end-to-end execution path of individual user transactions with all physical and virtual servers, logical software components and methods.

Automation and Offline Analysis

Integrate PerformaSure with any third-party system as part of a continuous integration process, and save session recordings for further analysis, to achieve efficient, uninterrupted performance testing.

Unique Flexibility

Expand visibility across your JEE environment by configuring the PerformaSure X-Agent to instrument any Java class in your Java application.

About Quest Software, Inc.

Quest Software, Inc., a leading enterprise systems management vendor, delivers innovative products that help organizations get more performance and productivity from their applications, databases, Windows infrastructure and virtual environments. Quest also provides customers with client management through its ScriptLogic subsidiary and server virtualization management through its Vizioncore subsidiary. Through a deep expertise in IT operations and a continued focus on what works best, Quest helps more than 100,000 customers worldwide meet higher expectations for enterprise IT. Quest Software can be found in offices around the globe and at www.quest.com.



www.quest.com
e-mail: info@quest.com
Please refer to our Web site for international office information.

© 2009 Quest Software, Inc. Quest and PerformaSure are registered trademarks of Quest Software, Inc. Tag-and-Follow is a trademark of Quest Software, Inc. Java and all Java-based marks are trademarks or registered trademarks of Sun Microsystems, Inc. in the US and other countries. All other products are trademarks or registered trademarks of their respective companies.

DSA-PerfSure-050609-US-AG