



"Toad for DB2 is exactly what we were looking for in a developer tool and is far better and easier to use than any of the alternative offerings available. The functionality in Toad for DB2 is excellent, and the interface is easy to use. The editor, debugger and object search tool are really excellent, as is the code snippets tool. A real plus is the ability to tie in with a version control program. Our impressions are very positive."

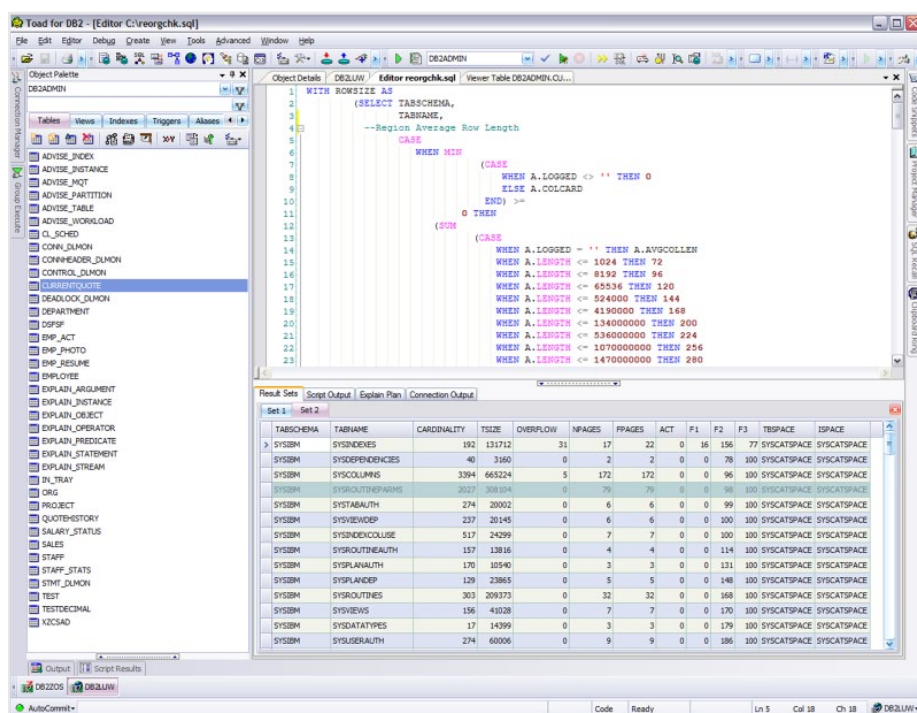
— John Enevoldson
DBA/Systems Developer
Pulsen Application AB

- Reduces the total cost of ownership of IBM DB2
- Enables true cross-platform database skills utilization through a common look and feel across database platforms
- Improves SQL quality through automatic SQL optimization
- Enhances data security and reduces the chance of user errors
- Improves productivity via a feature rich, intuitive graphical user interface
- Integrates seamlessly with Quest's database development lifecycle tools to provide a complete database development solution

The Essential Database Management Tool for IBM® DB2®

The IBM DB2 family of databases for Linux, Unix, Windows and z/OS has a significant worldwide install base and can be found in all industry verticals. As database development environments become more heterogeneous, many developers, database administrators and business analysts with limited experience with DB2 are being asked to write applications on DB2. This presents skills migration challenges that can lead to inefficient SQL code development, which is often the source of poorly performing applications. Organizations need to ensure that SQL is optimized during development because it can be up to seven times more expensive to fix after it is deployed to production.

Toad® for IBM® DB2® from Quest Software provides you with a proven, intuitive tool that improves productivity and code quality on DB2 Linux, Unix and Windows and DB2 z/OS. DB2 developers of all skill levels now have a single toolkit for creating and debugging stored procedures, generating SQL and viewing and editing DDL. Toad for DB2 simplifies script execution and automates basic object management, resulting in improved productivity and shortened development cycles. Skills migration is effortless for developers and DBAs familiar with Toad on other database platforms.



SQL Editing in Toad for IBM DB2

System Requirements:

Supported Databases

- IBM DB2® for z/OS 8.1 or later
- IBM DB2 for Linux, Unix, and Windows (LUW) 8.1.5 or later, 9.0

Minimum Hardware

Requirements:

- 600 MHz Processor
- 185 MB of disk space for installation
- 512 MB of RAM minimum, 768 MB recommended

Minimum Software

Requirements:

- Microsoft® Windows® XP Professional (32-bit only), 2003 (32-bit only), or Windows Vista (tested on 32-bit Ultimate edition with XP Graphics)
- Microsoft .NET Framework version 3.5 SP1 or later
- Microsoft Internet Explorer version 6.0
- Adobe Acrobat Reader version 5.0 or later (for viewing the Getting Started Guide)
- Adobe Acrobat Reader version 7.0 or later (for viewing the Getting Started Guide)

Database Operating System

Platform:

- z/OS: V1R6 Base Services [5694-A01] or later
- LUW: IBM AIX 5.1, 5.2, 5.3, 6.1;
- HP-UX 11i 1.5, 2 (32- and 64-bit);
- Red Hat Enterprise Linux AS release 3 and 4 (32- and 64-bit);
- Solaris 7, 8, 9, 10 (32- and 64-bit);
- SuSE 7, 8, 9;
- Windows 2000, 2003, XP



www.quest.com
e-mail: info@quest.com
Please refer to our Web site for international office information.

SQL Management

The SQL Editor integrates SQL modeling so you can visually create SQL queries. Formatting and debugging features provide SQL refinement, while SQL optimization simplifies writing efficient, reliable statements. You can also import data and export query results in a variety of formats, including XML and Excel.

Object Management

You can browse, create, clone and alter database objects and permissions via intuitive GUI-based wizards. Additionally, you can view advanced object properties and DDL as well as create HTML or PDF schema reports for the objects.

Streamline and Automate Tasks

Toad for DB2 offers several features to help DBAs and developers work more efficiently. Not only does the streamlined workflow help you easily move from one task to another, you can also automate frequent and repetitive tasks and effortlessly manage projects.

Customizable User Interface

Customizable, advanced object filters reduce the time spent navigating through databases by allowing you to show only the objects of interest. There are hundreds of user settings for various display options, such as which windows and object types to show, how SQL is formatted and which data grids are displayed. This allows you to tweak the user interface to suit your workflow. Best of all, these settings are saved so you do not need to repeat the customization every time you start Toad.

Toad Security

Administrators can customize the Toad user interface based on user profiles, so that they have access only to the data they need to work with, thus reducing the chance of manual errors.

Built-In DB2 Client and Connect

Toad eliminates the need for users to install DB2 client software and DB2 personal connect.

About Quest Software, Inc.

Quest Software, Inc. delivers innovative products that help organizations get more performance and productivity from their applications, databases and Windows infrastructure. Through a deep expertise in IT operations and a continued focus on what works best, Quest helps more than 18,000 customers worldwide meet higher expectations for enterprise IT. Quest Software can be found in offices around the globe and at

www.quest.com.